



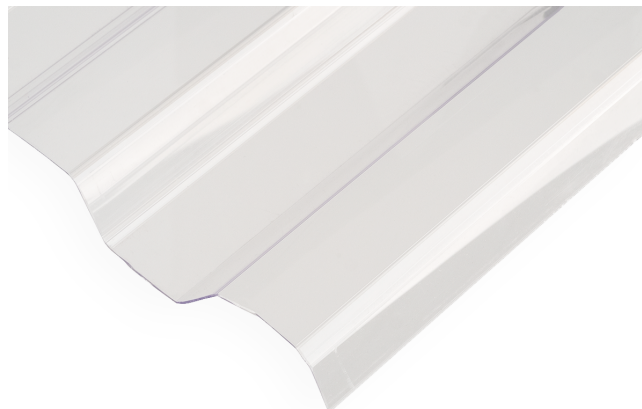
Corrugal Corrugated Polycarbonate

Durable Clear Corrugated Polycarbonate Panels

Description and Overview

Corrugal corrugated polycarbonate sheets consist of rigid but lightweight corrugated polycarbonate panels that weather harsh exterior applications. Superior strength, durability, and weatherability combined with excellent transparency and UV resistance make Corrugal ideal for the covering of outdoor structures such as pergolas and canopies.

Corrugal withstands extreme temperatures up to 275°F without loss in mechanical characteristics and has low flammability.



Max sheet size: 49.60" x 288"

Applications and Uses

Corrugal blocks UV radiation while allowing up to 89% of visible light through, making it an ideal candidate for outdoor coverings and greenhouses. They can be used anywhere external light is necessary for internal lighting purposes.

Corrugal applications include:

- Skylights
- Swimming pool coverings
- Canopies and awnings
- Pergolas
- Roofing and cladding for industrial areas
- Greenhouses
- Balconies
- Central gardens

Installation recommendations:

- Install the sheets with the UV side facing upwards and once it has been installed remove the tape and labels.
- Do not leave the sheets with tapes under the sun as it can become impossible to be removed.
- Use 2" screws for the installation of Greca and Sinus sheets.
- Use 3" 7/2 screws for Big Wave sheets.
- The usage of 79mm diameter EPDM is recommended for fastening screws.
- Screws must be screwed perpendicular to the sheets.
- Do not tighten the screws too much as it can damage the EPDM joint.
- The diameter of the hole for the screws is 3-4mm.

Properties and Specifications

Type	Profile	Thickness (mm)	Width (mm)	Length (mm)
Corrugal Sinus	76/18	0.5-1.2mm	810-1100-1260	1.5-11.80
Corrugal Greca	76/18	0.6-1.2mm	810-1100-1260	1.5-11.80
Corrugal Big Wave	177/51	1-1.2mm	920-1100-1200	1.5-11.80

Colors		Light Transmission %
Clear		89
Opal		50
Bronze		50
Grey		35
Blue		50
Green		50

Properties are typical.
Chem is an abbreviation for chemically affixed with glues, chemicals, or adhesive.
Mech is an abbreviation for mechanically affixed bonding.
Field testing is recommended for any application.

